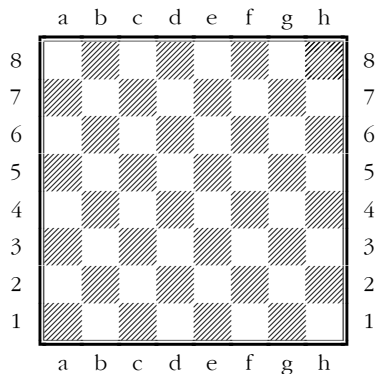


Positional Evaluation Checklist ver. 1.0



1. What is the material balance?

2. Are there any (direct) threats?

3. How is the safety of both Kings?

- Number of attackers

- Number of defenders

- Number of pawns near King and their placement

4. Pawn structure

a. Where are the open lines and diagonals?

Are there any strong squares?

b. Who is controlling the center?

c. Who has more space and where on the board do they have it?

d. Who has the more favorable endgame pawn structure?

5. Which pieces are active, and which are not?

a. Queens

b. Rooks

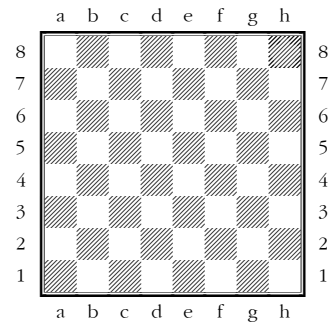
c. Bishops

d. Knights

Evaluation Conclusion:

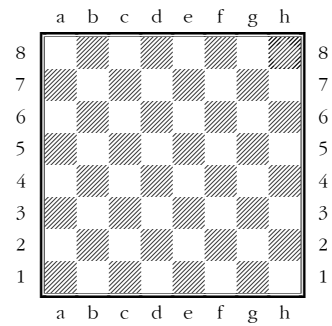
Candidate move selection: 1. _____ 2. _____ 3. _____

Candidate move 1. _____ analysis



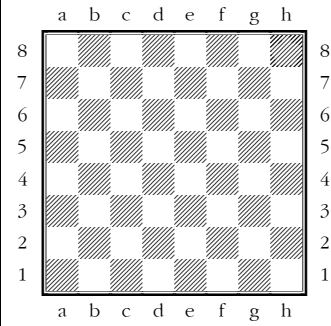
Evaluation at end of analysis:

Candidate move 2. _____ analysis



Evaluation at end of analysis:

Candidate move 3. _____ analysis



Evaluation at end of analysis:

Additional Notes:

